

Specification

VetiPad Series		
Model Name	VetiPad M1 Plus	VetiPad M1
Scintillator	CsI (Cesium Iodide)	
Physical Specifications		
Dimensions	460 mm x 460 mm x 15.5 mm	460mm x 384 mm x 15.5 mm
Weight (with battery)	4kg (deviation ≤ +15%)	3.3kg (deviation ≤ +15%)
Weight-bearing	200 kg on the surface of the whole plate and 100 kg within a diameter of 40 mm from the center	
Drop	≤ 1 m	
Protection class	IP54	
Image Acquisition		
Exposure Size	43 cm x 43 cm (17inches x 17inches)	35 cm x 43 cm (14inches x 17inches)
Collection matrix	3072 x 3072 pixels	2560 x 3072 pixels
Pixel size	140 μm	
Bit Depth	16 bit	
DQE	70%	
Spatial resolution	3.6 LP/mm	
Energy Range Standard	40 kVp to 150 kVp	
Connectivity		
Detector to Router	Wireless Standards: IEEE 802.11 n/ac Operating Frequency: 2.4GHz or 5GHz	
Router to Network	LAN wired Ethernet:10 M/100 M/1000 m adaptive	
Advanced applications		
iShotHelper	✓	
Image Stitch	✓	
Image Post-processing	✓	



Search Mindray Animal Medical

www.mindrayanimal.com
service@mindrayanimal.com

P/N:ENG-VetiPad M1/M1Plus-210285X6P-20240424
 ©2024 Shenzhen Mindray Animal Medical Technology Co., Ltd. All rights reserved.



VetiPad M1/M1Plus

Veterinary Digital Detector and Imaging System

Precise Imaging Trusted Care



Fast and Efficient

AED: Adaptable to any normal generator or monobloc

Safe and Reliable

1-meter drop protection
Safe, reliable, and not easily damaged



DQE:70%
Bring superior imaging with lower radiation doses

Dustproof and Waterproof: IP54

High level of dustproof and waterproof, protect the panel from animal hair or body liquid, extend the service life



Proficient and Tailored for Veterinarians

Professional veterinary software
Derived from the Vetix S300 series, equipped with specialized features and tools for animals such as iShotHelper, iMeasure, and Image Stitching

iShotHelper - Professional Positioning Guidance

Detailed guidance and accurate positioning



iMeasure - Cardiac and Orthopedic Measurement Tools

Intelligent calculation for VHS, RLAD, VLAS, HD, TPLO measurement



Image Stitching - Long Bones Stitching

Enhancing diagnostic capability

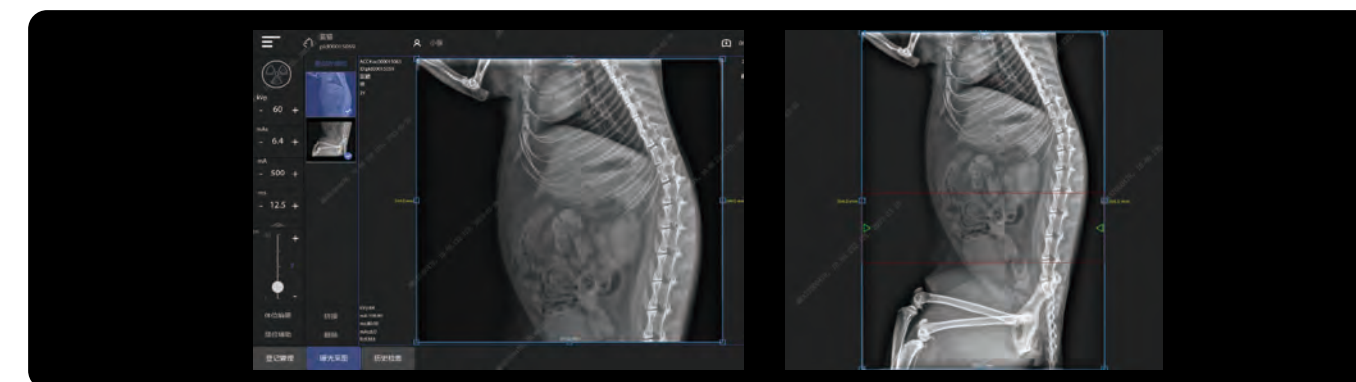
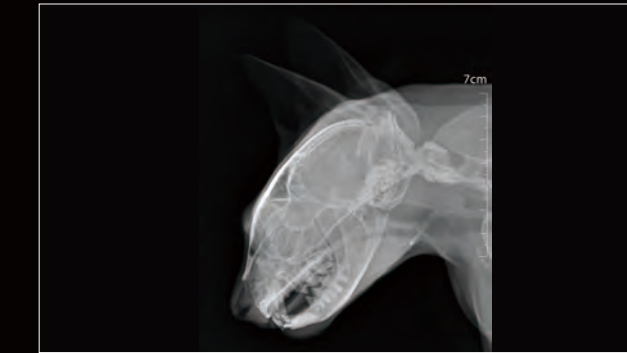
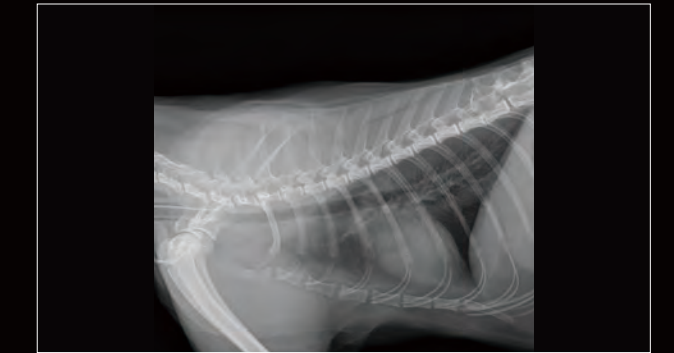


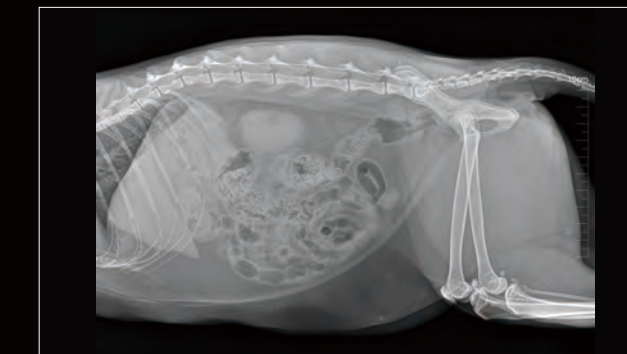
Image Gallery



Skull lat



Chest Right Lat



Abdomen Right Lat



Abdomen Ventrodorsal



Chest Right Lat



Abdomen Left Lat



Astragalus Lat



Limb