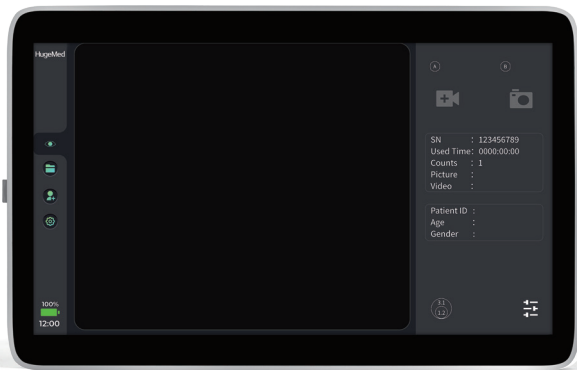


HugeMed

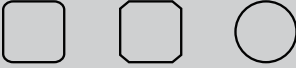


MS-8

Medical
Image Processor

Datasheet

Model	MS-8
Standard	CE marking according to REGULATION (EU) 2017/745 Class II a according to Chapter III of Annex VIII EN 60601-1:2006+A2:2021; EN 60601-1-2:2015+A1:2021
Operating	Temperature: 5°C-40 °C, atmospheric pressure: 800hPa-1060hPa, humidity: 30%-80%.
Storage	Temperature: -10°C-45 °C, atmospheric pressure: 800hPa-1060hPa, humidity: 30%-80%.
Transportation	Temperature: -20°C-50 °C, atmospheric pressure: 800hPa-1060hPa, humidity: 20%-90%.

Physical specification	
Dimensions	386.4 (h) x 253.6 (w) x 38.5 (d) mm
Weight	2.7 kg
Display	
Display size	15.6 inches
Display resolution	1920*1080 px
Display type	Color TFT LCD with touch screen
Display orientation	Support dual-view display, rotation function
Function of Setting	
Scope button configuration	Function of A/B: White Balance, Zoom, Taking photo, Video recording, Freezing, Disable
Image adjustment	LED Level/Sharpness/Color Tone/Contrast
Language	English, French, German, Spanish, Portuguese, Swedish, Finnish, Norsk, Italian, Russian and Chinese
Pre-recording	Control function of Patient Information Management on/off
Image border	
Output interface	
USB I	Connect to the Laptop/PC or U disk for the data transfer
Digital video output	HDMI, DVI and SDI for connectivity to the external monitor
Output resolution	Full HD 1920*1080 px
Input interface	
VL-port	For connection with endoscope which configured with the USB Type-C cable
Endoscope Port	For connection with endoscope with the edge connector
DC	Power supply
USB II	Updating system
Recording function	
Recording format	JPG for photograph or MP4 for video
Memory capacity	64 GB including operating system
Audio recording	No
Power supply	
Power adapter input	AC 100-240V 50/60Hz, 1.5A Max(Battery charger)
Battery	Lithium battery rechargeable, DC 7.2V, 9500 mAh
Battery continuous working time*	Maximum 5 hours when battery under good condition and normal usage
Mounting interface	
Mounting interface standard	VESA MIS-D 100/75, C compliant displays with mounting interface
Cleaning and Disinfection	
Recommended cleaning method	It is recommended that wiped by water mixed with detergents or enzymatic solution for cleaning.
Recommended disinfection method	It is recommended that wiped by 75% medical alcohol.

*The battery needs to be replaced if working time is less than 30 mins.